

# How to use **Autolet<sup>®</sup> impression**

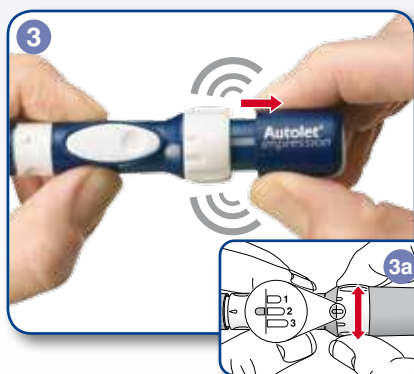
## Simple and adjustable



Insert a new lancet, remove the protective cap and attach the depth adjuster.



Adjust the penetration depth, selecting one of the seven settings.



Prime the device by pulling the main body and the device sleeve apart until you hear a **CLICK**, then choose your desired force setting.



Hold the device firmly against the finger, press the release button. Remove the depth adjuster and discard the used lancet in a suitable sharps container.



**HEAD OFFICE  
INTERNATIONAL SALES & MARKETING**  
Owen Mumford Ltd  
Brook Hill, Woodstock  
Oxfordshire OX20 1TU, United Kingdom  
T : 01993 812021 F : 01993 813466  
E : info@owenmumford.co.uk

**UK / IRELAND SALES & MARKETING**  
Owen Mumford Ltd  
Primsdown Industrial Estate  
Worcester Road, Chipping Norton  
Oxfordshire OX7 5XP, United Kingdom  
T : 01608 645555 F : 01608 646546  
W : www.medicalshop.co.uk  
E : info@owenmumford.co.uk

**NORTH AMERICA**  
T : 800-421-6936  
F : 770-977-2866  
E : info@owenmumfordinc.com

**FRANCE**  
T : 02 32 51 88 70  
F : 02 32 21 96 95  
E : contact@owenmumford-fr.com

**GERMANY**  
T : 06026/97750  
F : 06026/977529  
E : info@owen-mumford.de

**CHINA**  
T : 021 6032 3528  
F : 021 6032 3782

[www.owenmumford.com](http://www.owenmumford.com)  
[www.medicalshop.co.uk](http://www.medicalshop.co.uk)



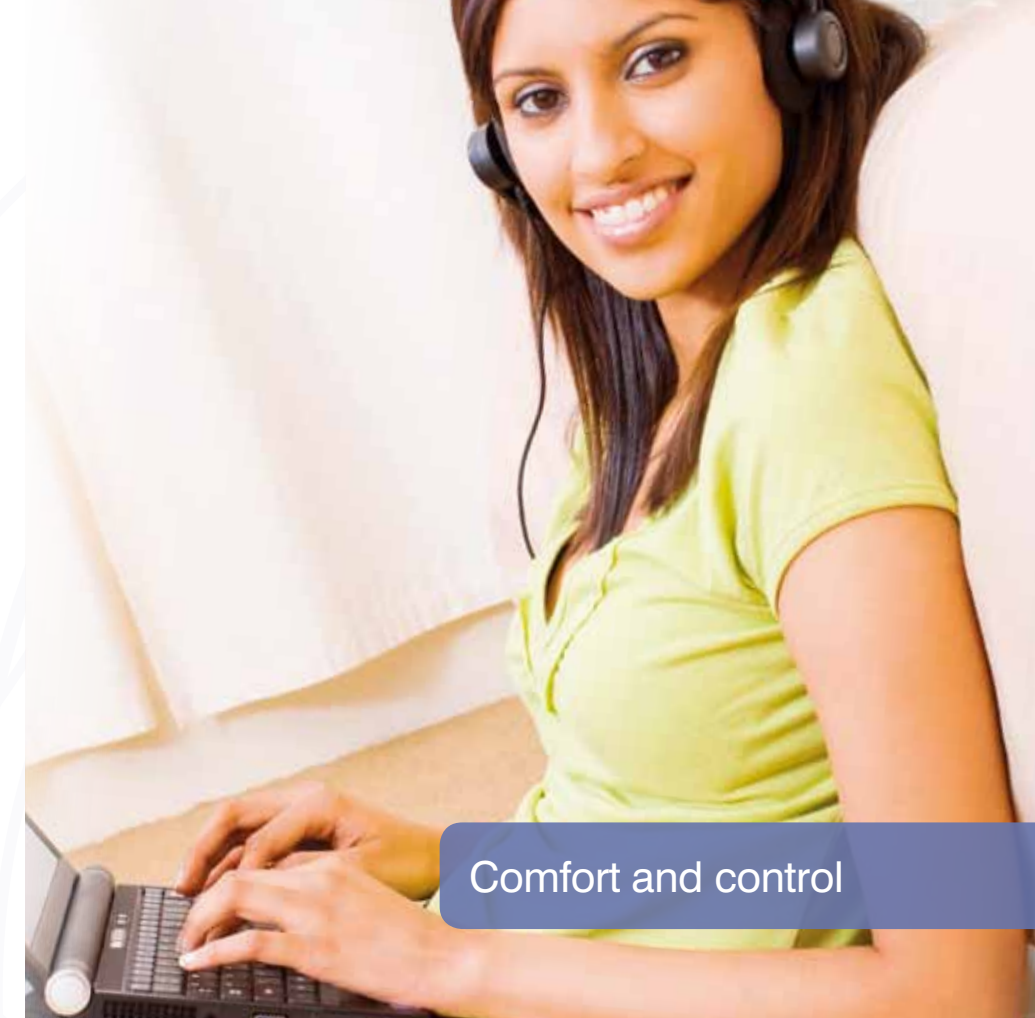
Smartphone users can scan this code for more information about **Autolet<sup>®</sup> Impression**.

### OUR ACCREDITATIONS INCLUDE:

- ISO13485 Certification
- Medical Device Directive 93/42/EEC
- CMDCAS 13485 (Canadian Health Authority)
- Environmental Management Systems ISO14001



AN/3690-LT/MCC0112/8



Comfort and control

**Autolet<sup>®</sup>  
impression**

Lancing Device



# Autolet® impression

## Lancing Device

**Autolet® Impression** is an advanced lancing device designed to provide maximum comfort and control when obtaining a blood sample, encouraging regular glucose testing and management of blood sugar levels.

Our unique **Comfort Zone Technology®** provides a virtually **pain free** blood sampling experience.

The raised dots of **Comfort Zone Technology®** mask the sensation of pain by stimulating the nerve endings responsible for sensing contact, pressure and texture. This masks the brain's identification of the needle puncture.

### How does it work?

When pressed against the sample blood site, a series of 8 raised dots stimulate the nerve endings responsible for contact, pressure and texture. This sends a strong continual message of comfort to the brain – masking the weaker pain stimulus received when the lancet punctures the skin.



### Precise adjustment for a personal experience.

To achieve optimal blood flow and comfort, **Autolet® Impression** offers 21 settings, allowing the user to select the combination which delivers the correct blood volume first time. Seven depth settings and three force settings allow exact adjustment for all skin types and sampling requirements.



**Alternate site sampling**

**Autolet® Impression** comes with a clear alternate site end cap that allows the device to be used for testing on alternate sites such as the forearm.

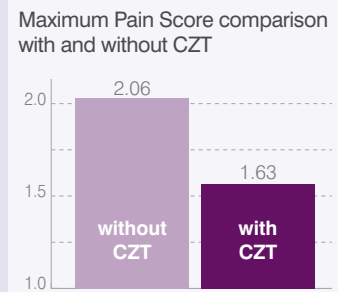
### Large button and ergonomic design make Autolet® Impression easy to use.

Many people with diabetes also have dexterity issues, making blood sampling difficult. The ergonomic design of **Autolet® Impression** has been developed to make it simple to use.



## Clinical Evidence

Lancet trials showed that **Comfort Zone Technology®** reduced the overall pain experienced during the blood sampling procedure when compared to devices without **Comfort Zone Technology®**.



## Compatibility

**Unilet®** lancets fit **Autolet® Impression** and are compatible with most other lancing devices (excluding Roche).

### Unilet® ComforTouch™

Designed for maximum comfort, with a specially shaped ultra-thin 28 gauge needle.

Box of 100: AT0465 PIP code: 224-2568  
Box of 200: AT0460 PIP Code: 224-2576



### Unilet® GP Superlite

A 23 gauge needle that is suitable for people with tougher skin.

Box of 100: AT0455 PIP code: 045-2144  
Box of 200: AT0450 PIP code: 045-2169



### Unilet® Eco 28G

A 28G needle delivers blood volumes suitable for most modern blood glucose meters.

Box of 100: AT0935 PIP code: 357-8903  
Box of 200: AT0940 PIP code: 357-8911

